

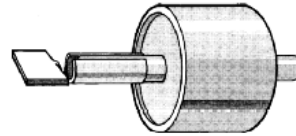
Specifications

Frequency: DC to 40 GHz

Material: 0.025 mm heat-treated BeCu

Plating: Bondable Gold

Total thickness: 0.038 mm



Anritsu

K Connector®

Sliding Contacts for Stripline

Part Number: K110-2

Figure 1. Glass Bead with K110-2 Sliding Contacts

1. Tools And Materials

The following tools and materials will be helpful in installing the K110 Sliding Contacts on the pin of the glass bead.

Name	Vendor and Model/Part Number
Stereo Microscope	Bausch & Lomb 30 power
Step Drill	01-108 ANRITSU Co.
Jewelers Screwdriver	any
Tweezers	any

2. Machining Dimensions

Machining dimensions for the mounting hole required for installation of the K102 F/M Sparkplug and K103 F/M and K104 F/M Flange Mount K Connector assemblies are given in Figure 2.

The precision step drill listed in the table in paragraph 1 makes it easier to achieve concentricity of the respective four or three holes required for the K102 or K103 and K104 installations

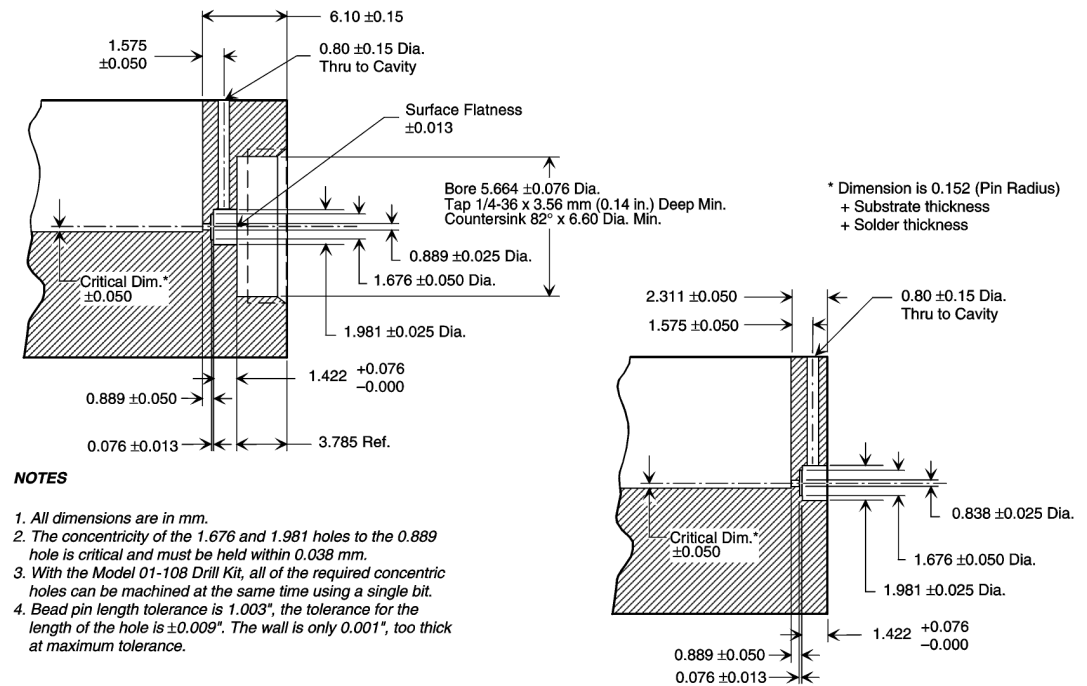


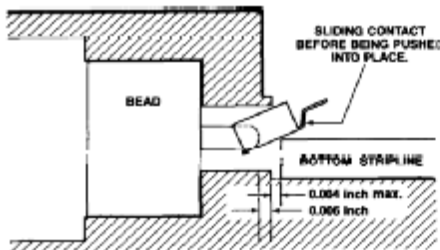
Figure 2. Mounting Hole Dimensions for K102 Sparkplug and K103/K104 Flange Mount Connector

3. Fabrication Instructions

The sliding contacts slip over the pin of the glass bead and mate with the microcircuit. The following is the recommended procedure for installing the sliding contacts and mating them with the microcircuit.

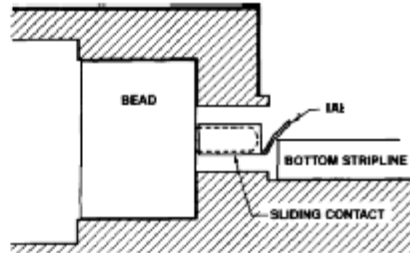
- a. Drill the required holes and install the microcircuit and glass bead, as shown in the instruction sheet that accompanies the K102F/M, K103F/M, or K104F/M assembly.

- b. Check that the center pin in the glass bead is level with the top of the microcircuit ± 0.051 mm. If necessary, bend the pin to achieve this degree of levelness.
- c. Install the K110-2 Sliding Contact using either of two methods described in Figure 3.



Method 1

1. Install the lower stripline board.
2. Using the tweezers, place the K110-2 onto the center pin, and position as shown above.
3. Using a jewelers screwdriver, gently push the sliding contact onto the center pin.
4. Press the tab onto the stripline. Solder bond or epoxy, if desired.
5. Install the top stripline. The finished assembly should resemble Figure 4.



Method 2

1. Using the tweezers,
 - Place the K110-2 onto the center pin of the bead, and position it as shown above.
 - Gently tilt the tab on the K110-2 upward, and install the bottom stripline into the cavity.
2. Press the tab onto the stripline. Solder bond or epoxy, if desired.
3. Install the top stripline. The finished assembly should resemble Figure 4.

Figure 3. K110-2 Sliding Contacts Installation

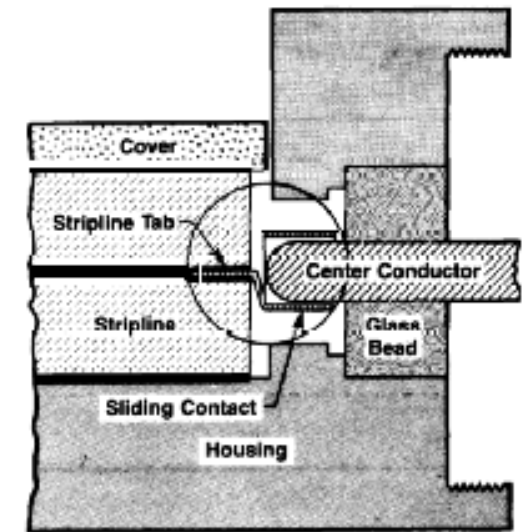


Figure 4. K110-2 Sliding Contacts Installation 2